

How can the YAC help Historic England to 'Enrich the List'?

A quick guide to creating an account and adding a listing

To Enrich the List, you must first sign-up to create an account and you must be 16 or over to do this. Consequently, we suggest that one YAC Leader register on behalf of the whole YAC branch and then upload details, possibly as part of a session.

How to Register

1. To register for an account, go to <https://account.historicengland.org.uk/register/> and enter your details.
2. You will be sent an activation email to the address you entered in the registration form. Make sure you follow the link to finish setting up your account.
3. Once you have registered you will receive an email. You can reply to this email and request that your 'contribution name' (which will be your name) is replaced by your YAC branch name. For example:

Instead of Contribution by: 'Rachel Arbury' – change to 'Leeds YAC'

Create your account

First name (required)

Last name (required)

Email address (required)

Password (required)

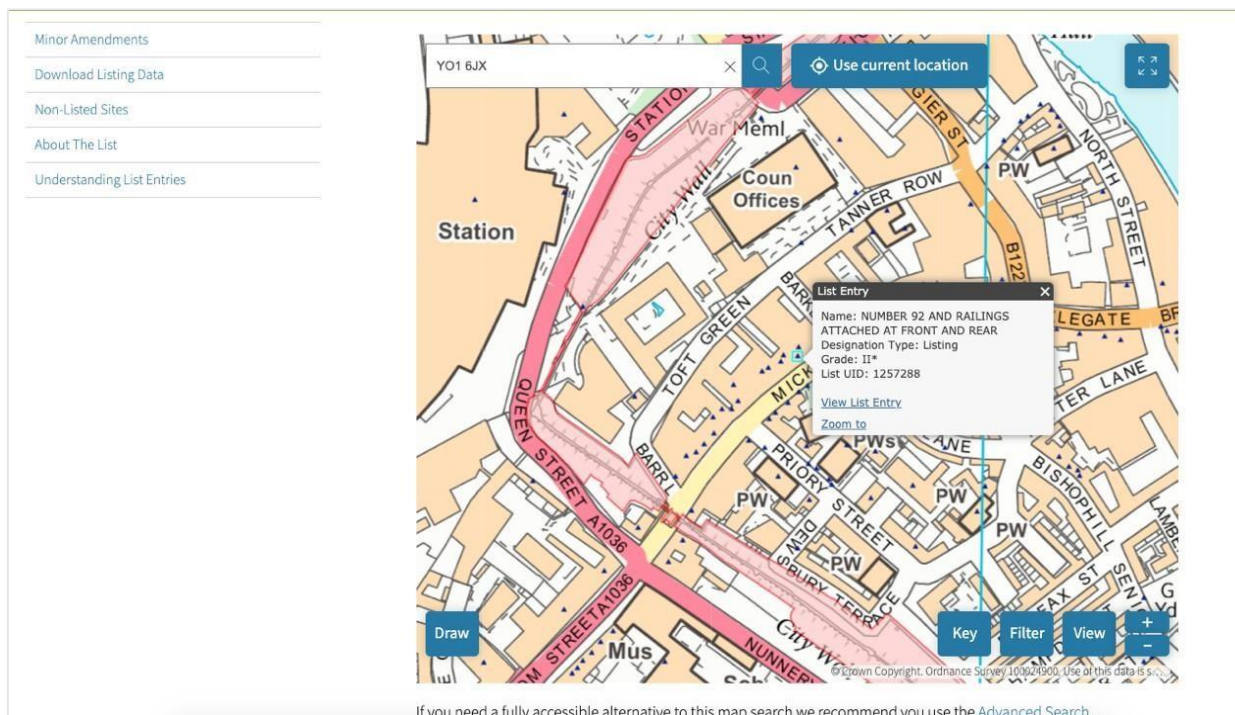
 [Show](#) 

☐ I would like to subscribe to the Historic England newsletter.

☐ I agree to the website [terms and conditions](#). (required)

Create account

- Click on one of the triangles to bring up the listing details for that site and click View List Entry for more details.



- Once you are in the List Entry itself, scroll down and you'll find the details for the building or monument listed.

Details

YORK

SE5951NE MICKLEGATE 1112-1/15/671 (North side) 14/06/54 No.92 and railings attached at front and rear

GV II*

House, with area railings attached to front and rear. c1789, with C19 alteration; renovated 1989. Red brick in Flemish bond on stone plinth, with painted stone dressings and doorcase; modillion and dentil cornice of timber to hipped slate roof with truncated brick stack at rear. Iron railings on low stone plinths at front and rear. EXTERIOR: 3-storey 3-window front. At left end, stone steps with bootscrapers lead to 6-panel door in architrave with moulded cornice hood. All windows are 4-pane sashes with flat arches of gauged brick; those on ground and second floors have painted stone sills, sill band on first floor. Raised first floor band. At right end of cornice, inverted bell-shaped rainwater head with fallpipe on clamps enriched with fleurs-de-lys. Rear: 4-pane sashes in enlarged openings with segmental arches. 3-course raised band of brick at first floor, and brick dentil eaves cornice. INTERIOR: ground floor:


5. Keep scrolling and you will find the section that allows you to add your own, or your branches, contributions. Enter your comment in the box and attach any photos using the button as shown.

Your Contributions

Do you know more about this entry?

The following information has been contributed by users volunteering for our [Enriching The List project](#). For small corrections to the List Entry please see our [Minor Amendments procedure](#).


The information and images below are the opinion of the contributor, are not part of the official entry and do not represent the official position of Historic England. We have not checked that the contributions below are factually accurate. Please see our [terms and conditions](#). If you wish to report an issue with a contribution or have a question please email EnrichingTheList@HistoricEngland.org.uk.



Rachel Arbury ▼

Write a contribution ...

1,000 characters left



Post

6. Once approved by the team at Historic England, your contribution will be displayed under the listing.



Rachel Arbury

05 July 2021 at 07:56

Plaques on the front of 92 Micklegate. This photo was taken on the day the office closed due to the first Covid-19 lockdown in March 2020.



[respond](#)